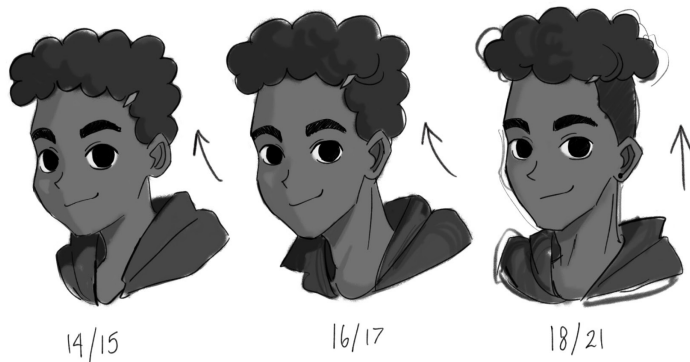


APARTMENT 325: CHARACTER SHEETS

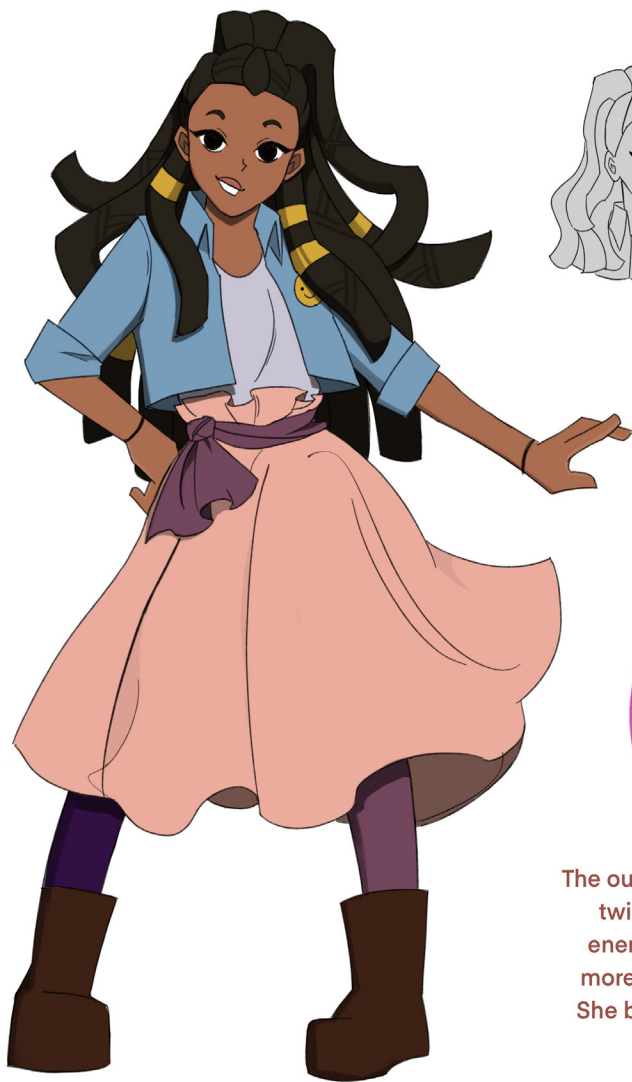




JORDAN

The shy, curious half of the Neebu twin duo. Although he is extremely pensive, his calm and friendly demeanor says otherwise.

Jordan isn't expressive, and lives in his head more than in the real world. He occasionally shows a glimpse of strong emotion when he can't process what he sees.




 "G"
 ear



GABBY

The outgoing, goofy half of the Neebu twin duo. A very optimistic and energetic girl who wants nothing more than her friends to be happy. She bickers and pokes fun at those she loves the most.

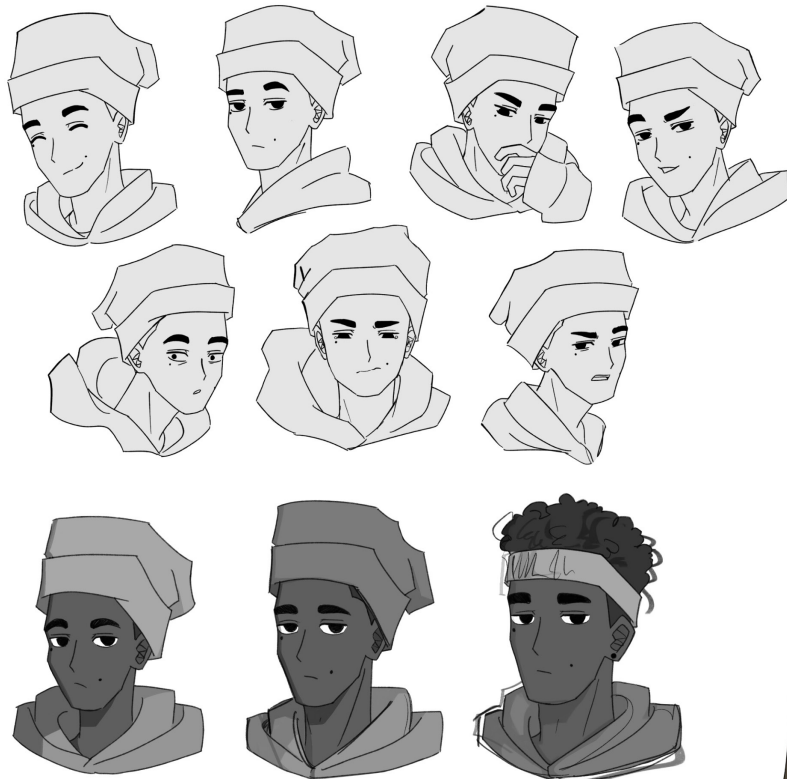




RACHEL [RAE]

Witty and clever, Rachel is the most grounded member of the group. Due to her keen observational skills and level-head, her hunches are almost always correct.





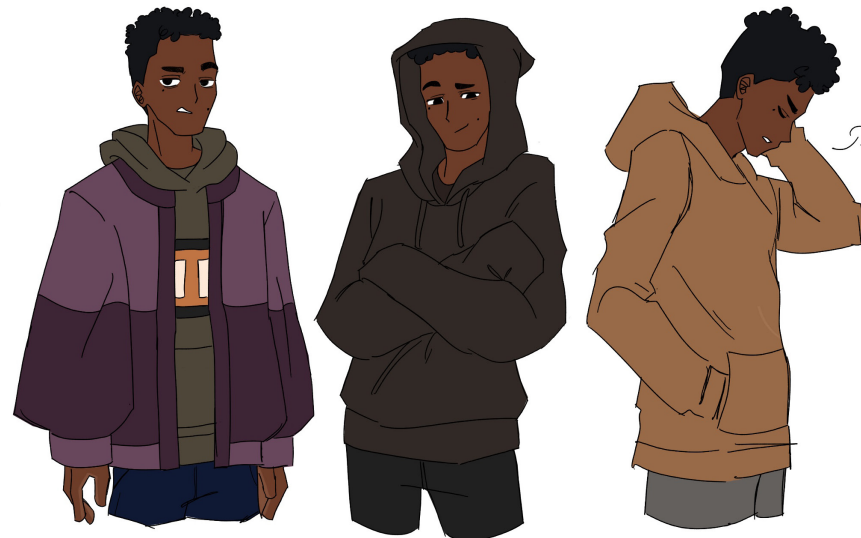
14-16

17-19

20-23

MK [MaKami]

Reserved and introverted, MK is the most laid-back in the group. He's soft spoken and listens more than he speaks, so he is often mistaken for rude or intimidating. He keeps his walls up, but deeply cherishes the relationships he has with his friends.



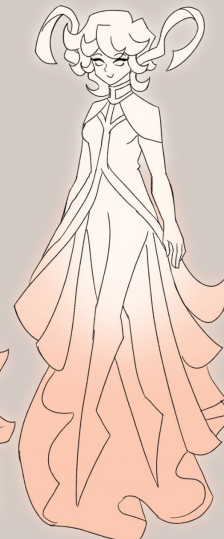
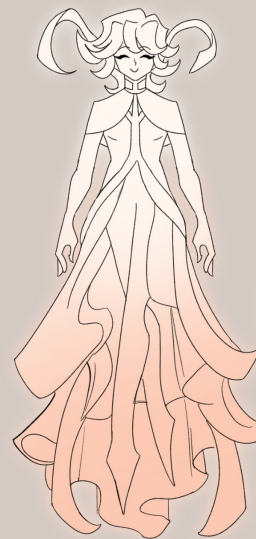


Moira's favorite
Pneuma
(3 tails)



MOIRA

The intelligent, easy-going spirit and protector of Apt 325. She guides the kids through the crazy world of the pseudo-future. She's often seen reading or playing with the mini-pneumas that swim around the apartment.





ANDREW

Charismatic and mysterious, Andrew is known for his charming personality and looks. Andrew is quite mischievous and is always up for a good time. He'll pull strings in order to keep himself entertained...even at other's expense.

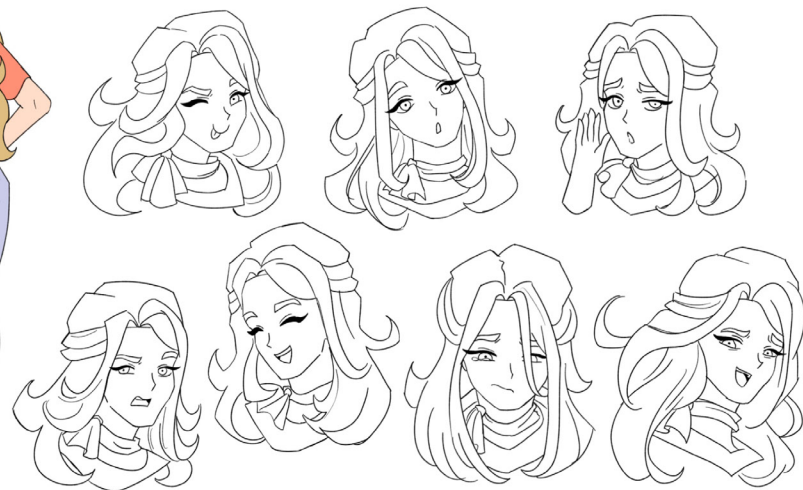
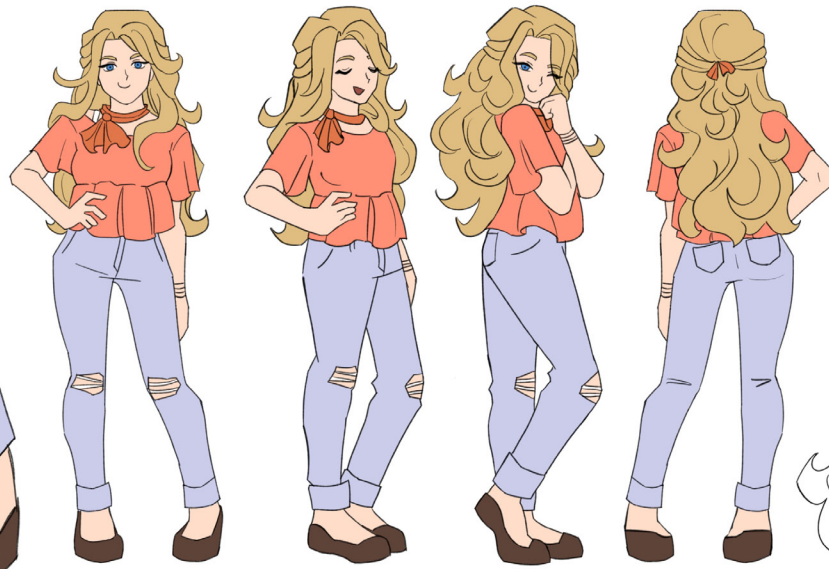
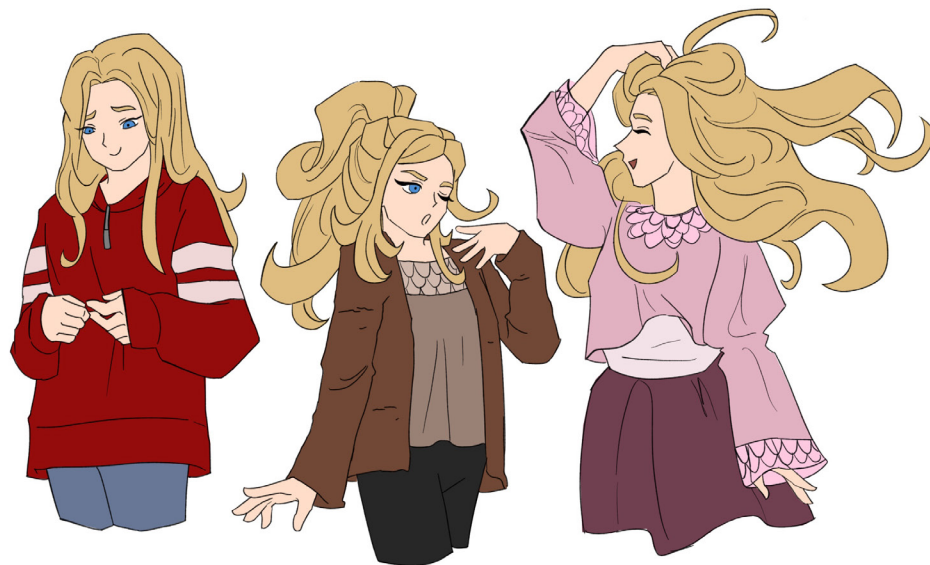


ABIGAIL

[GABI]

Outgoing and popular, Abigail is known for her captivating smile and charming nature. Part of Andrew's friend group, Abigail often goes along with everyone's shenanigans (she's easily swayed). Despite her friendliness, Abigail has shy side - as well as a different persona that few people have the misfortune of experiencing.

She likes to go by "Gabi" because it "sounds cute", much to the annoyance of Gabby.





SAHIL

Quick-witted and very goofy, Sahil quickly befriends Rachel after the two bond over an obscure comic series. Both Rachel and Sahil act as guides when the other feels conflicted or overwhelmed.

Sahil eventually introduces Rachel to his chaotic and entertaining friend group, who all welcome Rachel with open arms.





KORY

The infamous and rowdy class clown, Kory becomes acquainted with Jordan after Jordan covers for him repeatedly. He isn't responsible, but is quite dependable, and remembers those who've treated him well.

While Jordan and Kory are on different levels socially, the two have way more in common than they could've anticipated, and end up becoming good friends as time goes on.

